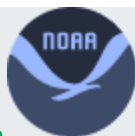


From...



National Centers for  
Environmental Information  
NATIONAL OCEANIC AND ATMOSPHERIC ADMINISTRATION

National Centers for Environmental Information

# Assessing the Global Climate in April 2022

Month tied as the fifth-warmest April on  
record for the globe



The global surface temperature for April 2022 tied with 2010 as the fifth highest for April in the 143-year NOAA record, which dates back to 1880. The year-to-date (January-April) global surface temperature was also the fifth warmest such period on record. According to [NCEI's Global Annual Temperature Rankings Outlook](#), it is virtually certain (> 99.0%) that the year 2022 will rank among the 10 warmest years on record.

## Related Links

[April 2022 Global Climate Report](#)

[Climate at a Glance](#)

[Global Temperature and Precipitation Maps](#)

[Temperature Percentiles Explained](#)

[Precipitation Percentiles Explained](#)

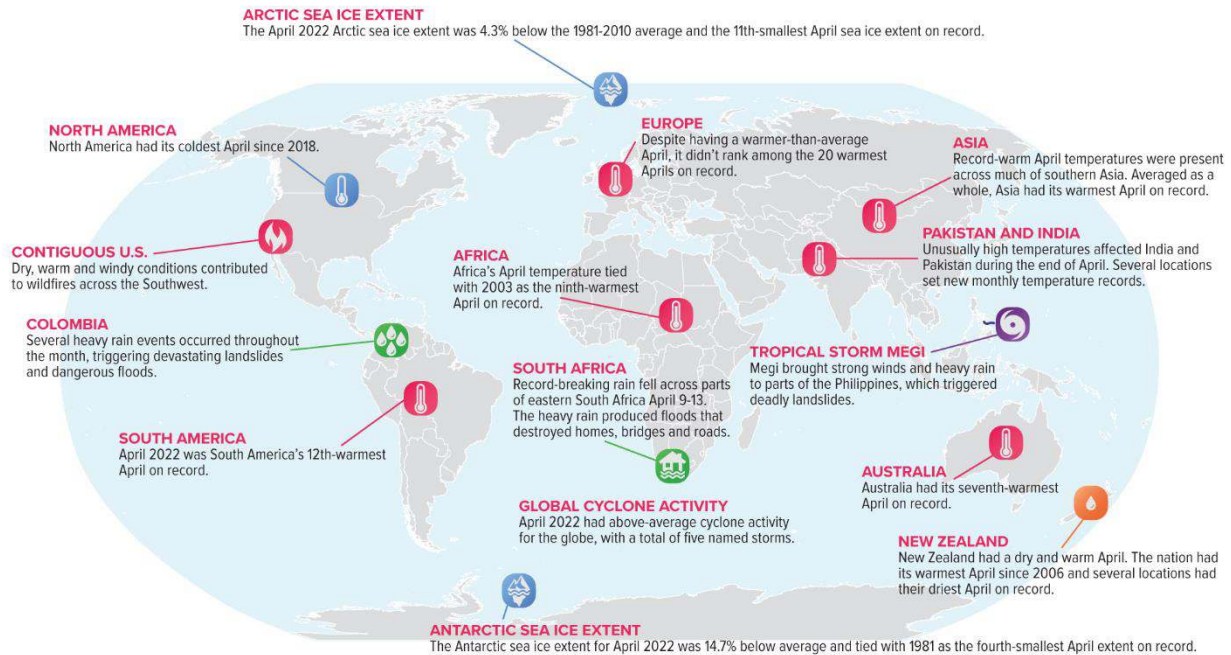
[State of the Climate Summaries](#)

## Selected Significant Climate Anomalies and Events: April 2022



### GLOBAL AVERAGE TEMPERATURE

April 2022 average global surface temperature tied with 2010 as the fifth-warmest April since global records began in 1880.



Please note: Material provided in this map was compiled from NOAA's State of the Climate Reports. For more information please visit: <http://www.ncdc.noaa.gov/sotc>

**NOAA's National Centers for Environmental Information** calculates the global temperature anomaly every month based on preliminary data generated from authoritative datasets of temperature observations from around the globe. The major dataset, [NOAAGlobalTemp version 5](#), updated in mid-2019, uses comprehensive data collections of increased global area coverage over both [land](#) and [ocean](#) surfaces. NOAAGlobalTempv5 is a reconstructed dataset, meaning that the entire period of record is recalculated each month with new data. Based on those new calculations, the new historical data can bring about updates to previously reported values. These factors, together, mean that calculations from the past may be superseded by the most recent data and can affect the numbers reported in the monthly climate reports. The most current reconstruction analysis is always considered the most representative and precise of the climate system, and it is publicly available through [Climate at a Glance](#).

**NOAA's Report continues at LINK:** <https://www.ncei.noaa.gov/access/monitoring/monthly-report/global/202204>