

Palatka FL: "Gem City of the St Johns River". A Quintessential Character Town.

Palatka with its downtown civic buildings, museums, hotel and parks in the midst of its historic and affordable neighborhoods is becoming a quintessential character town.

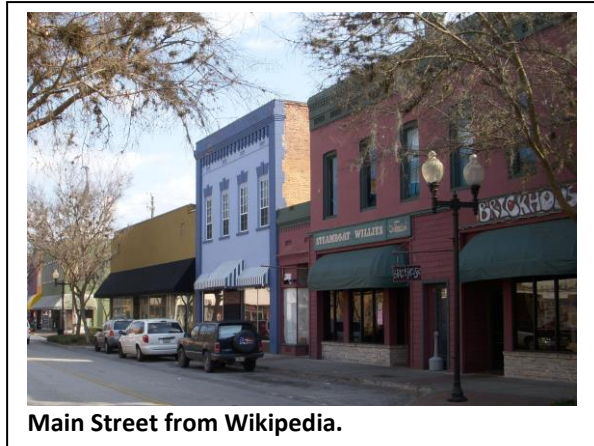
Palatka is a city in [Putnam County, Florida](#), United States. The population was 10,558 at the 2010 census. It is the [county seat](#) of Putnam County. Palatka is the principal city of the [Palatka Micropolitan Statistical Area](#), which is home to 72,893 residents. The city is also home to [St. Johns River State College](#), [St. Johns River Water Management District](#) Headquarters, and [Ravine Gardens State Park](#). The area is well known for its local festivals, most notably the [Florida Azalea Festival](#) and the Blue Crab Festival.

History. In 1849, Putnam County was created, with Palatka the county seat. With the help of Judge Isaac H. Bronson, it was incorporated as a city on January 8, 1853. Paper mills constituted the economic base for decades; recent improvements have transformed its base and re-focused investments towards the St. Johns River and its affiliated lifestyle and recreation accommodations. The addition of a hotel downtown supports local businesses and enables the tourist trade to entice day-trippers to become week-enders.

LINK: <https://www.palatka-fl.gov/>

From Visit Florida...Nestled within a bend of the St. Johns River, one of the few rivers that flow north, Palatka is a historic Northeast Florida city that proudly showcases its past. You can experience Old Florida charm in Palatka while you celebrate Florida's heritage at the Florida Azalea Festival, St. Johns River Catfish Festival, Blue Crab Festival or Bostwick Blueberry Festival. Activities: bass fishing, camping, canoeing, kayaking the area's eight blueway trails, touring historic homes and churches built in the 1800s, hiking or bicycling, and visiting birding sites listed in the Great Florida Birding Trail. Also, don't miss the Palatka Mural Tour.

LINK: <https://www.visitflorida.com/places-to-go/northeast/palatka/>



Main Street from Wikipedia.



Riverfront Park, Downtown.



A Downtown Hotel expands the business and visitor market.

Palatka FL: "Gem City of the St Johns River". A Quintessential Character Town.



CITY OF MURALS

The Conlee-Snyder Mural Committee, initiated by the City of Palatka Historic Preservation Board, began operation under the guidance of the Main Street program of Downtown Palatka, Inc., in early 1998. The Committee was named in honor of (and in tribute to) Leon Conlee, tenured City Commissioner and philanthropist, who passed away in 1997; and Clinton R. Snyder, Jr., and Elizabeth W. Snyder the founders of this organization. Their mission is to accurately depict the historical, cultural, and natural riches of Palatka and Putnam County in larger-than-life murals. In sharing these pictorial renderings with visitors and citizens, appreciation of the heritage of the community will be enhanced and developed. Visit www.conleemurals.org for more information.

HISTORIC DISTRICTS. **LINK:** <http://www.palatkadowntown.com/palatka-history.html>

- **The Palatka North Historic District** is a [U.S. historic district](#) (designated as such on November 17, 1983) located in [Palatka, Florida](#). The district is bounded by the [St. Johns River](#), Bronson, North 1st, North 5th, and Main Streets. It contains 76 historic buildings, including the [Bronson-Mulholland House](#) and [St. Mark's Episcopal Church](#).
LINK: https://en.wikipedia.org/wiki/Palatka_North_Historic_District
- **The South Historic District** mostly features midsize homes that are reasonably priced. This is a well-established community that continues to attract interest from buyers looking in the Palatka area.
LINK: <https://www.neighborhoods.com/south-historic-district-palatka-fl>