

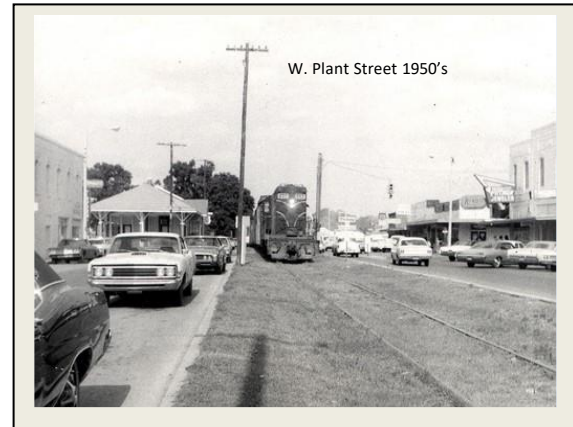
The West Orange Trail, Winter Garden FL.

The City of Winter Garden was established in 1903. During most of the twentieth century, the City and its region were the central focus of Florida’s citrus industry. The City had several citrus processing plants with truck and rail lines to move the various types of citrus into the City for processing and out of the City for export to northern markets. A main feature of the City for most of the century were rail tracks in the median of Plant Street, the town’s main street.

By the 1990’s, citrus had declined as an economic activity in the City. The freezes had moved the industry south. In response, the City identified an asset right in the middle of town that could be re-purposed to become one of the town’s economic generators...the railroad line that served the town for decades became the West Orange Trail; a transformative community facility resulting from a vision held by many partners. The Trail now serves as a major element in the City’s framework.

The 22-mile trail connects Oakland to the west with Apopka to the north, but the City of Winter Garden is the hub, the location of shops and restaurants, bike shops, a renovated live theater, three museums and a public space in the heart of town that is crowded with residents and regional visitors.

A town does not have to be big to take advantage of opportunities offered by neglected or derelict facilities, places or spaces.



W. Plant Street 1950's



W. Plant Street in the 1990's,
the difference is more than color.

